

# PRISM

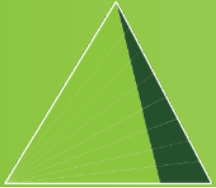


TOTAL POWER SOLUTIONS | RENEWABLE POWER | WATER SOLUTIONS  
INTEGRATED BUILDING MANAGEMENT SYSTEMS | TURNKEY PROJECTS



**PRISM**





We think SUSTAINABLE



about

team

connect

solutions

partners



# ABOUT US

**PRISM GROUP** is synonymous to Renewable Energy and Sustainability. Aiming to effectively change the quality of living, working and delivering solutions, **PRISM** aspires to be your “value enhancing solutions and service provider”.

A coherent vision for sustainable development, a focus on the needs of the present without compromising the capacity of future generations and a guarantee to balance between economic growth, care for the environment and social well-being, this is what we are.

The negative environmental consequences of economic growth and globalization is inevitable. With this consciousness, we strive to prevent nature from being used as an inexhaustible source of resources.

Our solutions in **Renewable Energy, Saving Water, Desalination, Wastewater Treatment and Sustainable Mobility** contribute to achieving environmental sustainability on several fronts. **PRISM** wants to lead the transition towards a low-carbon economy, quality benchmark and innovation processes to all projects, optimization of efficient use of resources and respect for the environment.

**PRISM** Enterprise Electrical Trading LLC (PEET), a one-stop solution to power, renewable energy and sustainable living is an innovative leader in all spheres of sustainable and alternate energy sources.

**PRISM** Project Management Services (PPMS), strives to change the way people do business. From facility enhancing to work culture-shaping to reliable and efficient alternate solutions, we’d like to leave a mark on how businesses are run.

*If the question is about Sustainability and a Zero Carbon footprint, at **PRISM**, we have the solution.*

We think SUSTAINABLE







# PEET

**PRISM** Enterprise Electrical Trading LLC (PEET), a niche service provider for Reliable Power Solutions is a market leader in all Power solutions.

- From power generation to transmission and distribution
- From captive powerplants to rental power solutions
- From bridge power to hybrid power solutions

We are also a “turnkey infrastructure solution provider” (TISP) for Water Solutions. Our expertise also incorporates Integrated Business Management. All this, from a market leader across MEA regions with end-to-end modeling from concept to delivery of structuring, alternate & efficient solutions, management and execution, with reliability & sustainability.

Our Solutions include:

- **Total Power Solutions**
- **Specialized Water Infrastructure Solutions -**
  1. Conservation
  2. Wastewater Management
  3. Desalination
  4. Atmospheric Water Generation
- **Integrated Business Management**
- **Renewable Energy Solutions**
  1. Solar
  2. Wind
  3. Wave
  4. Geothermal

We think SUSTAINABLE



*Our tagline, “Think Sustainable” is not just a fashionable trending hashtag. Its what we stand for and the essence of all that we do and the way we do it.*



# PPMS

Unlike our flagship division PEET, **PRISM** Project Management Services (PPMS) is a global consulting firm that delivers project management and business consulting services to clients in the MEAT region.

Founded in the last quarter of 2018 in Dubai, we undertake turnkey project management from concept to design and detail engineering.

PPMS has developed a suite of products and services supported by industry leading systems that ensure we deliver and keep our promise to our customers. Our services stem from a platform of practical knowledge and experience. we believe that our objectives need to be continuously aligned with our customers' requirements, whether technical or commercial, to meet the dynamic demands of modern business.

PPMS activities:

- Facilitate infrastructure solutions from fossil fuel to renewable sources adapting to demand & supply challenges.
- Forge alliances to build synergies with regional players bringing in global technologies to develop sustainable & reliable power networks.
- Assist in developing the power network redundancies and help build transitional power solutions.
- Complete the value chain of our services end to end, support for funding options from global investors.

We think SUSTAINABLE



#### Our services include:

- Project Management
- Management Consulting
- Energy Audits and Energy Saving Solutions
- Infrastructure Solutions
- Technology
- Renewable Energy Management





# OUR TEAM

Teams are made of characters, and **PRISM** is all about powerful, self-willed, passionate characters. We strongly believe that for any team to bring out its best, it needs to be driven by a combination of motivating leadership, encouraging work-culture and a bonding that spells understanding as well as lets you loosen your tie and chill.

A close-knit unit comprising of qualified Engineers, Project Managers, Strategists, Analysts, Operations Experts and Creative Minds bringing an incredible 150 years of experience to the table, **PRISM** is all about work and play!

At **PRISM**, we believe that a team bonded together over coffee is a team to watch out for!!!



We think SUSTAINABLE



*"If you treat people right, they will treat you right 90% of the time".*  
Franklin D Roosevelt



# OUR SOLUTIONS

We turn creative and innovative thinking into reality. We question the conventional wisdom and challenge the norm. If there is a better way, we'll find it. We are excited by ingenuity and thrilled to try something new.

*"There is a way to do it better, find it."*

*Thomas Edison*

We think SUSTAINABLE



Power Solutions



Water Solutions



iBMS



Sustainable Living



Renewable Energy



Environment Monitoring



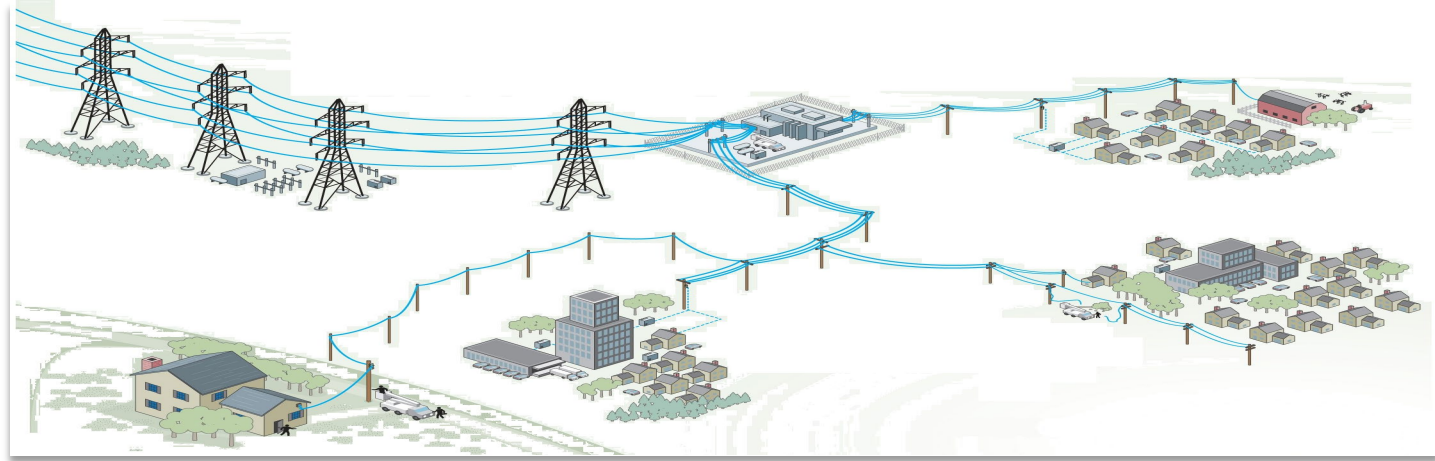
Technology



# OUR SOLUTIONS



POWER SOLUTIONS



From solutions for power generation to transportation, distribution and deployment, we, at **PRISM**, do it all.

If it's anything related to power and energy, and all in between, we are in the forefront.

From power plants to a plug, we strive to make energy available, accessible, sustainable, and affordable.

GENERATION

TRANSMISSION

DISTRIBUTION

PRODUCTS

We think SUSTAINABLE



# OUR SOLUTIONS



POWER SOLUTIONS

## Turbines and Generators!



**PRISM** is a value-added service provider for Reliable Power Solutions. Managing turnkey projects from the starting point of Power Generation from primary energy sources, be it renewable or non-renewable, **PRISM** ensures the smooth transition of Power from the turbines to the transmitters and beyond.

A versatile renewable power service provider.

We think SUSTAINABLE



[GENERATION](#)

[TRANSMISSION](#)

[DISTRIBUTION](#)

[PRODUCTS](#)



# OUR SOLUTIONS



POWER SOLUTIONS

Carrying Power on our Shoulders!



Electrical Power Transmission might be just the transportation of Power from its point of generation to the points of distribution, but the art of making that process seamlessly efficient and smooth is where our expertise lie.

At **PRISM**, when we take upon ourselves the movement of power through the grid lines, we are not only transporting just POWER.

We are transporting Quality and Reliability.

We think SUSTAINABLE



GENERATION

TRANSMISSION

DISTRIBUTION

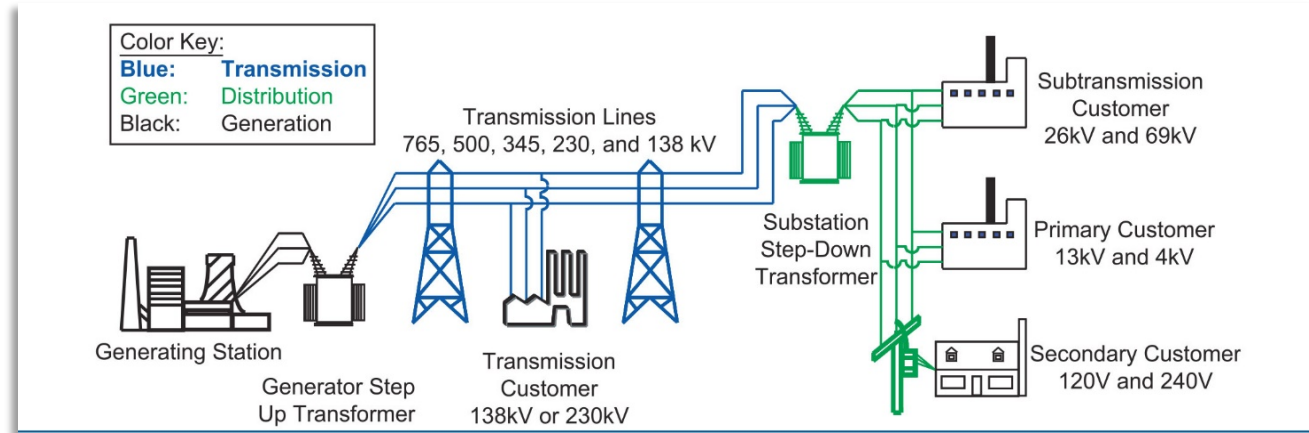
PRODUCTS

# OUR SOLUTIONS



POWER SOLUTIONS

We step in to Step-Up and Step-Down!



We think SUSTAINABLE



Affordable, Accessible and Reliable Power at your fingertips is what **PRISM** strives towards.

When we say we bring it to your homes, you can be rest assured it's the best that is being delivered.

[GENERATION](#)

[TRANSMISSION](#)

[DISTRIBUTION](#)

[PRODUCTS](#)





# OUR SOLUTIONS




## POWER SOLUTIONS

### Our Power Products, fit in to your needs!

**PRISM** under its PEET flagship, is also a leading dealer for all your electrical trading requirements. We offer a one-stop-shop solution for a complete range of electrical products. **PRISM** provides comprehensive services starting from the design & procurement for Power solutions specifically for Power **Generation, Transmission and Distribution.**

Our products & solutions include:

- Diesel Generators
- Gas/Water Turbines
- Solar Solutions for a wide range of applications including On and Off grid systems, commercial and residential rooftops, BIPV solutions and Solar Farms.
- Geothermal, Wind and Tidal power solutions

We think SUSTAINABLE



Lighting & Accessories

LV Solutions

LV Power and Control Panels

LV Power and Control components

[GENERATION](#)

[TRANSMISSION](#)

[DISTRIBUTION](#)

[PRODUCTS](#)



# LIGHTING PRODUCTS



**POWER SOLUTIONS**

The Right kind of Lighting is very important to Life itself. In future, all aspects of our lives will be made "intelligent & smart", including light and the way we relate to it.

Our Partners, Hansa Green Technology works in the domain of energy saving lighting and benefiting world with its niche technology.

We maintain efficiency and integrity in development and innovation, as our operation philosophy.

HANSA GREEN LED Lights wing is a leader in sustainable, energy-efficient LED lighting.

We offer a broad spectrum under LED lighting solutions for commercial and residential applications.

We think SUSTAINABLE



We Specialize in **Smart Street Lighting** and **Intelligent Home Lighting**.

## OUR PRODUCT RANGE



[GENERATION](#)

[TRANSMISSION](#)

[DISTRIBUTION](#)

[PRODUCTS](#)

# STREET LIGHTING



## Smart Street Lighting

We think SUSTAINABLE






LED Street Light  
**MODULAR**

**PRODUCT INFORMATION**

Light Source	: Bridgelux
Rated Luminous Efficacy	: 100-120 lm/W
LED Life Time	: > 50,000h
Type	: Outdoor
SDCM BINNING	: 5



LED Street Light  
**ULTRA**

**PRODUCT INFORMATION**


Light Source	: Bridgelux
Rated Luminous Efficacy	: 100-120 lm/W
LED Life Time	: > 50,000h
Type	: Outdoor
SDCM BINNING	: 5



LED Street Light  
**PELICAN-D**

**PRODUCT INFORMATION**


Light Source	: Cree
Rated Luminous Efficacy	: 135 lm/W
LED Life Time	: > 70,000h
Type	: Outdoor
SDCM BINNING	: 5



LED Street Light  
**PELICAN PRO**

**PRODUCT INFORMATION**

Light Source	: Bridgelux
Rated Luminous Efficacy	: 100-135 lm/W
LED Life Time	: > 50,000h
Type	: Outdoor
SDCM BINNING	: 5



LED Street Light  
**RIO**

**PRODUCT INFORMATION**

Light Source	: Cree
Rated Luminous Efficacy	: 120-150 lm/W
LED Life Time	: > 50,000h
Type	: Outdoor
SDCM BINNING	: 5

GENERATION

TRANSMISSION

DISTRIBUTION

PRODUCTS





# HOME LIGHTING



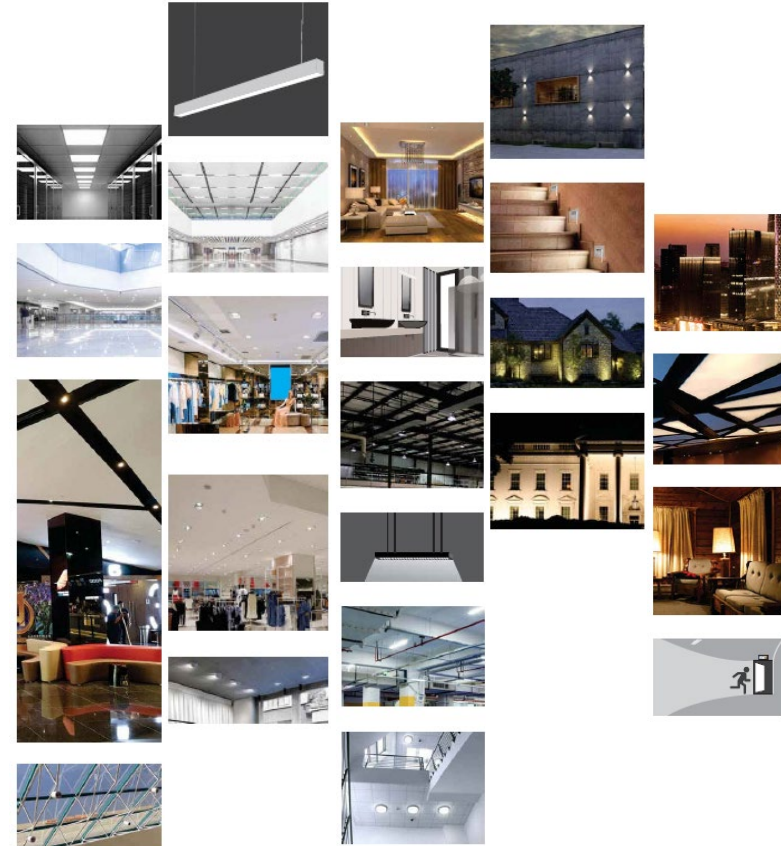
POWER SOLUTIONS

## Intelligent Home Lighting

Panel Lights  
Down Lights  
Bulkhead Lights  
Pendant Lights

High bay Lights  
Weather Proof  
Linear Fittings  
Wall Lights Ramp Lights

Linear Lights  
Buried Lights  
Flood Lights  
Spotlights  
Mirror Lights



We think SUSTAINABLE



GENERATION

TRANSMISSION

DISTRIBUTION

PRODUCTS

# PRODUCT CATALOG



POWER SOLUTIONS

## Hansa Green LED - KLASSEY Series

KLASSEY Series

**Hansagreen** LED

**EXCELLENTO GRANDEUR EY-R**  
LED Recess Mount Slim Panel (Round)

Size (mm)	Power (W)	Beam Angle (°)	Height (mm)
150	10	60	15
200	15	60	15
250	20	60	15
300	25	60	15

INPUT : AC 100-240V  
POWER : 6W/12W/15W  
CCT : 3000K/4000K/6000K  
CRI : >70  
BODY : Aluminium Die-Casting

KLASSEY Series

**Hansagreen** LED

**SUPREMO ECO EY**  
Big Panel 60x60 Lights

Size (mm)	Power (W)	Beam Angle (°)	Height (mm)
600	36	60	40

INPUT : AC 100-240V  
POWER : 36W  
CCT : 3000K/4000K/6000K  
CRI : >70  
BODY : Aluminium Frame

**EXCELLENTO GRANDEUR EY-S**  
LED Recess Mount Slim Panel (Square)

Size (mm)	Power (W)	Beam Angle (°)	Height (mm)
150	10	60	15
200	15	60	15
250	20	60	15
300	25	60	15

INPUT : AC 100-240V  
POWER : 6W/12W/15W  
CCT : 3000K/4000K/6000K  
CRI : >70  
BODY : Aluminium Die-Casting

**INNOSMART EY**  
LED Bulb E27/B22

Size (mm)	Power (W)	Beam Angle (°)	Height (mm)
100	10	60	100
150	15	60	150
200	20	60	200
250	25	60	250

INPUT : AC 100-240V  
POWER : 10W/15W/20W/25W  
CCT : 3000K/4000K/6000K  
CRI : >70  
BODY : Composite Aluminium  
BASE : E27

**EXCELLENTO CLASSIC EY-R**  
LED Surface Mount Small Panel (Round)

Size (mm)	Power (W)	Beam Angle (°)	Height (mm)
150	10	60	15
200	15	60	15
250	20	60	15
300	25	60	15

INPUT : AC 100-240V  
POWER : 6W/12W/15W  
CCT : 3000K/4000K/6000K  
CRI : >70  
BODY : Aluminium Die-Casting

**CASTEL EY**  
SpotLight

Size (mm)	Power (W)	Beam Angle (°)	Height (mm)
100	10	60	100
150	15	60	150
200	20	60	200
250	25	60	250

INPUT : AC 100-240V  
POWER : 5W/7W/10W/15W/20W  
CCT : 3000K/4000K/6000K  
CRI : >70  
BODY : Aluminium Die-Casting

GENERATION

TRANSMISSION

DISTRIBUTION

PRODUCTS

We think SUSTAINABLE



# PRODUCT CATALOG



POWER SOLUTIONS

## Hansa Green LED - KLASSEY Series

KLASSEY  
Series

Hansagreen  
LED

KLASSEY  
Series

Hansagreen  
LED

**VEGA EY**  
DownLight

Model	Power (W)	Beam Angle (°)	Height (mm)
VEGA EY 100	100	60	100
VEGA EY 150	150	60	150
VEGA EY 200	200	60	200
VEGA EY 300	300	60	300

INPUT : AC 100-240V  
POWER : 5/9/12/15/18W  
CCT : 3000K/4000K/6000K  
CRI : >70  
BODY : Aluminium Die-Casting

Also available in 5 EY in Square

**CROSSFIN EY**  
LED HIGHBAY IP20

Model	Power (W)	Beam Angle (°)	Height (mm)
CROSSFIN EY 100	100	60	100
CROSSFIN EY 150	150	60	150
CROSSFIN EY 200	200	60	200
CROSSFIN EY 300	300	60	300

INPUT : AC 100-240V  
POWER : 100/150/200W  
CCT : 3000K/4000K/6000K  
CRI : >70  
BODY : Aluminium

**NIMBUS R EY**  
DownLight

Model	Power (W)	Beam Angle (°)	Height (mm)
NIMBUS R EY 100	100	60	100
NIMBUS R EY 150	150	60	150
NIMBUS R EY 200	200	60	200
NIMBUS R EY 300	300	60	300

INPUT : AC 100-240V  
POWER : 3/5/7/9/12W  
CCT : 3000K/4000K/6000K  
CRI : >70  
BODY : Aluminium Die-Casting

Also available in 5 EY in Square

**CROSSBOW UFO EY**  
LED HIGHBAY IP65

Model	Power (W)	Beam Angle (°)	Height (mm)
CROSSBOW UFO EY 100	100	60	100
CROSSBOW UFO EY 150	150	60	150
CROSSBOW UFO EY 200	200	60	200
CROSSBOW UFO EY 300	300	60	300

INPUT : AC 100-240V  
POWER : 100/150/200/240W  
CCT : 3000K/4000K/6000K  
CRI : >70  
BODY : Aluminium Die-Casting

**PACIFIC NIO EY**  
FloodLight

Model	Power (W)	Beam Angle (°)	Height (mm)
PACIFIC NIO EY 100	100	60	100
PACIFIC NIO EY 150	150	60	150
PACIFIC NIO EY 200	200	60	200
PACIFIC NIO EY 300	300	60	300

INPUT : AC 100-240V  
POWER : 50/100/150/200W  
CCT : 3000K/4000K/6000K  
CRI : >70  
BODY : Aluminium Die-Casting

**LUMIBROOK SLIM EY**  
WEATHERPROOF

Model	Power (W)	Beam Angle (°)	Height (mm)
LUMIBROOK SLIM EY 100	100	60	100
LUMIBROOK SLIM EY 150	150	60	150
LUMIBROOK SLIM EY 200	200	60	200
LUMIBROOK SLIM EY 300	300	60	300

INPUT : AC 100-240V  
POWER : 40W  
CCT : 3000K/4000K/6000K  
CRI : >70  
BODY : ABS Plastic Material.

GENERATION

TRANSMISSION

DISTRIBUTION

PRODUCTS

We think SUSTAINABLE







# OUR SOLUTIONS



WATER SOLUTIONS

At  **PRISM**, we  
**PRODUCE, CONSERVE & TREAT**  
**WATER**



We think SUSTAINABLE



Water continues to be an essential and irreplaceable part of life itself. More than 3/4th of the Earth is covered in Water which is inclusive of Grey Water, Contaminated Water and Potable Water.

Even today, close to a whopping 1.5 billion people around the world lack safe drinking water!

At **PRISM**, we strive consistently to bring to fruition, people's need for clean water. From Producing Water to Conservation of Water to Desalination and Wastewater Management, we do it all.

# OUR SOLUTIONS



**WATER SOLUTIONS**

## Getting Water from *Thin* Air!

*Research proves there is more fresh water in the atmosphere than in all the rivers on the planet combined.*



Are you confident of the quality of the water you are drinking right now? It could be out of a tap or bottled mineral water or even one that is coming through a water purifier. Most of us are not aware of the quality of our drinking water.

If its bottled and sealed, it's got to be safe or if it's coming through a water purifier installed in our premises, it must be.

We think SUSTAINABLE



[AWG](#) [CONSERVATION](#) [DESALINATION](#) [WASTEWATER MANAGEMENT](#)

# OUR SOLUTIONS



**WATER SOLUTIONS**

## AQUAIR – Water from Thin Air!



We think SUSTAINABLE



AWG (Atmospheric Water Generator) Technology is a break-through solution to ease drinking water shortage and accessibility.

The concept behind the AWG machines is to produce pure drinking water from the atmosphere surrounding the earth. Humidity from the air is captured by the AWG unit and converted into pure healthy drinking water.

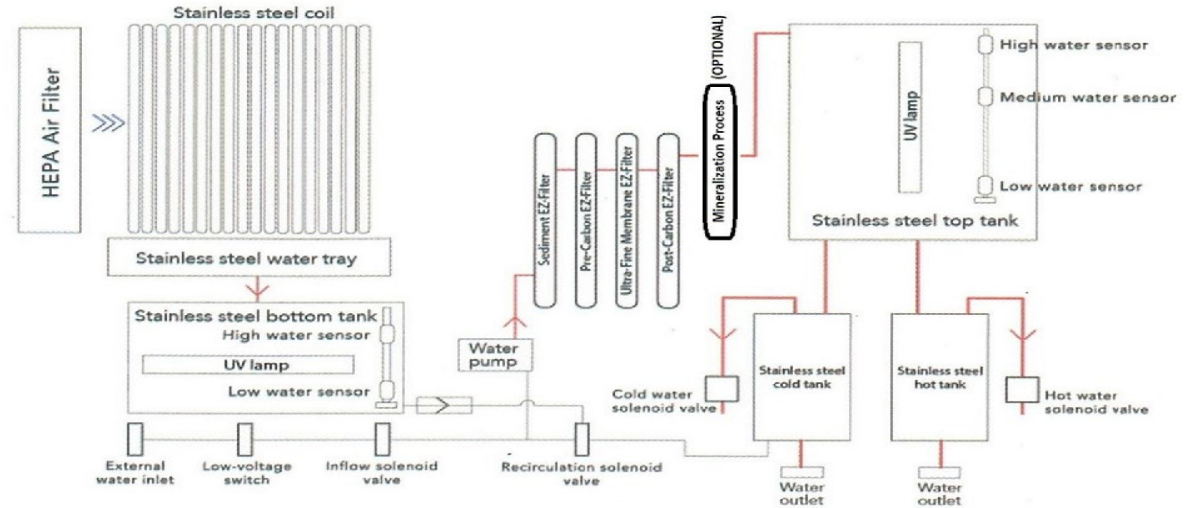
[AWG](#) [CONSERVATION](#) [DESALINATION](#) [WASTEWATER MANAGEMENT](#)



# OUR SOLUTIONS



## AQUAIR – Water from Thin Air!



### Our Range of Atmospheric Water Generators



TECHNICAL SPECIFICATIONS	
Operations Temperature	5C – 40C
Operations Humidity	30% - 100%
Water Filtration	Sediment + PP + Pre-Carbon + UF + Post-Carbon + Mineralization

Models are available in Capacities of 20Lt, 70Lt, 100Lt, 250Lt, 500Lt, 1000Lt, 2000Lt, 5000Lt, 10000Lt, & 20000Lt

AWG   CONSERVATION   DESALINATION   WASTEWATER MANAGEMENT

We think SUSTAINABLE



# OUR SOLUTIONS



**WATER SOLUTIONS**

Life is **ALTERED** with our Solutions!



Water Conservation is a BIG term.

At **PRISM** we understand that any sort of conservation takes time and effort to put into practice. That is why we aim to start at the level its easiest and counts the most - YOU.

Water Conservation is not a global event. We make it a part of your life!

We think SUSTAINABLE



[AWG](#) [CONSERVATION](#) [DESALINATION](#) [WASTEWATER MANAGEMENT](#)

# OUR SOLUTIONS



## WATER SOLUTIONS

Prism has teamed up with Swedish brand, ALTERED, to make Conservation a seamless part of every life. Products that fit right into your design, retrofit into your existing lifestyle and giving you satisfaction and results that speak volumes.

Water Saving products that ensure an absolute 85% to 98% saving not only in the water you use but a slash in your bills.

Made with Lead-free Ecobrass, the ALTERED products are built to seamlessly fit into your lifestyle, optimised for public areas with high efficiency and maximum savings.

With a simple 60 second installation, these retrofit and pre-fit products are exactly what you need if you are concerned about the future of Water.

*Made with Eco-friendly, no toxins and natural substances, you can be assured about even what's going down your drain!*



[AWG](#) [CONSERVATION](#) [DESALINATION](#) [WASTEWATER MANAGEMENT](#)

We think SUSTAINABLE



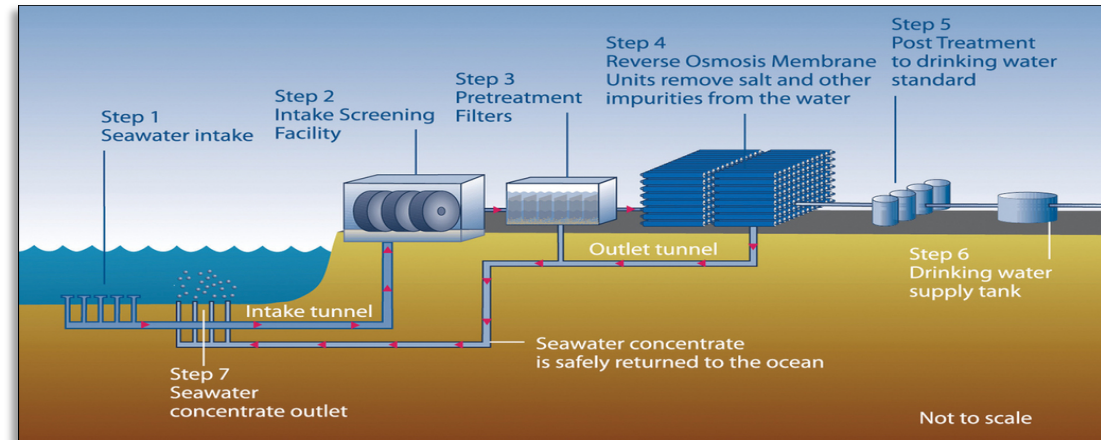


# OUR SOLUTIONS



WATER SOLUTIONS

A **PACT**<sup>®</sup> to Desalinate!



We think SUSTAINABLE



Potable Water is getting scarcer as we read! Seawater Desalination to acquire potable drinking water is part of what we at **PRISM** do, to further Water Sustainability.

To target the growing need of reliable water solutions that are affordable and accessible as a fundamental right, PRISM is committed towards the process of Desalination with our technology partners,

**PRISM PACT**<sup>®</sup> is the synonym for Desalination!

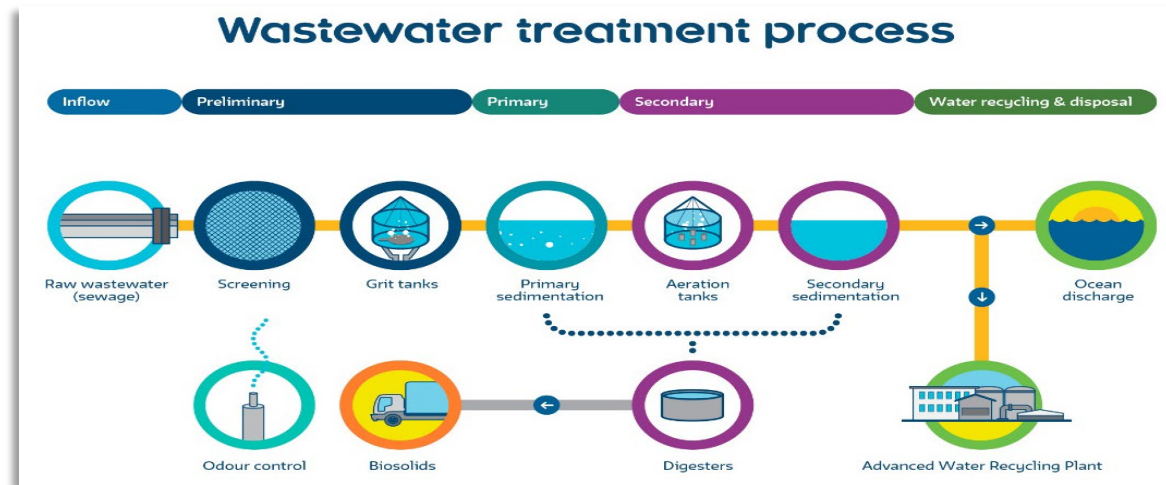
AWG CONSERVATION DESALINATION WASTEWATER MANAGEMENT

# OUR SOLUTIONS



WATER SOLUTIONS

A **PACT**<sup>®</sup> to Clean Up!



Being accountable and answerable for our footprints is the call of the hour.

Towards this, **PRISM** is dedicated and committed to Wastewater Management under its spectrum of sustainable activities. Water pollutants and chemicals are broken down and segregated to reclaim water into Grey Water that can be recycled into nature and reused for purposes of agriculture and sanitation.

[AWG](#) [CONSERVATION](#) [DESALINATION](#) [WASTEWATER MANAGEMENT](#)

We think SUSTAINABLE



# OUR SOLUTIONS



**RENEWABLE ENERGY**



Renewable Energy is energy essentially generated from renewables such as solar, wind, ocean, hydropower, biomass, geothermal resources, biofuels and hydrogen derived from these renewable resources.

Where the world is already familiar with Solar panels and Hydro power projects, we at **PRISM**, do not stop at that. Our passion for Renewable Energy is driving us to all the spheres there are to it. We specialize in delivering Renewable Solutions for a region that is best suited and that sometimes might mean, more than one solution, coupled together!

[SOLAR](#) [WIND](#) [WAVE](#) [GEOTHERMAL](#)

We think SUSTAINABLE



# OUR SOLUTIONS

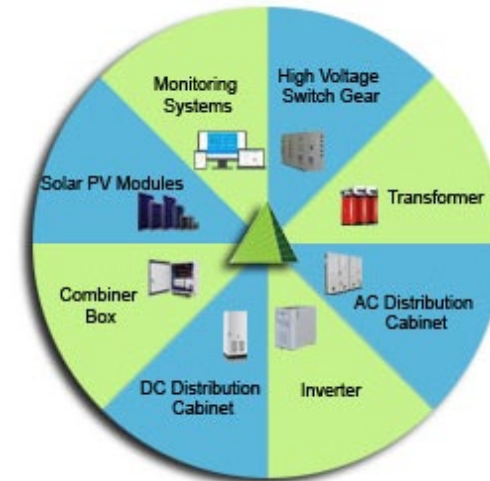


## RENEWABLE ENERGY

## SOLAR is the way Forward!

At **PRISM**, we consider ourselves a complete, Solar Solution Provider for a wide range of applications including On and Off grid systems, commercial and residential rooftops, BIPV solutions and Solar Farms.

With our Solar farm solutions, investors and users have the flexibility to maximize land utilization by combining solar power generation with agricultural farming and Aqua culture.



Our system comes fully equipped with PV modules, Mounting systems, combiner box, DC distribution cabinet, Inverters, AC distribution cabinets and with the option of connecting to LV ( 415V ) or MV ( 11/33KV ) and the monitoring system.

[SOLAR](#) [WIND](#) [WAVE](#) [GEOTHERMAL](#)

We think SUSTAINABLE





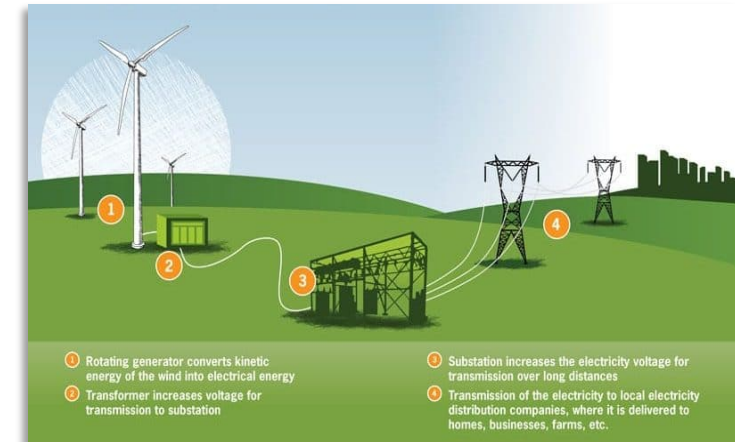
# OUR SOLUTIONS



## RENEWABLE ENERGY

### Let the WIND blow!

Wind energy is envisioned to play a significant role in the delivery of clean, renewable energy in the future. The costs are consistently reducing due to increased competition and larger turbines and components.



Wind power is one of the fastest-growing renewable energy technologies. Wind is used to produce electricity using the kinetic energy created by air in motion. This is transformed into electrical energy using wind turbines or wind energy conversion systems.

When sufficient wind is available in a remote, isolated grid area, energy conversion systems developed by our technology partners could significantly reduce energy costs. Turbine installations have demonstrated that up to 80% of energy needs could be met by wind energy.

[SOLAR](#) [WIND](#) [WAVE](#) [GEOTHERMAL](#)

We think SUSTAINABLE



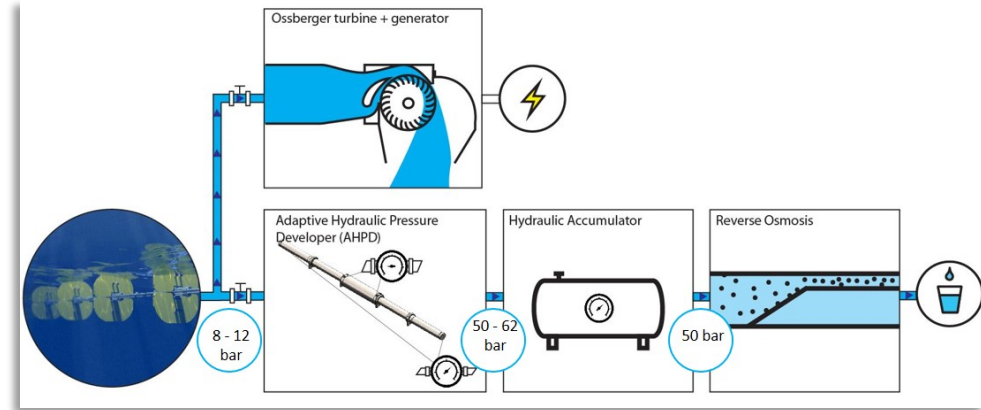
# OUR SOLUTIONS



## RENEWABLE ENERGY

### Creating the right WAVE for ENERGY!

Wave energy, also known as ocean energy, is energy harnessed from the ocean or sea waves. The kinetic energy captured from rigorous vertical surface ocean waves using energy technologies is used in generation of electricity and for desalination of water.



**PRISM**, in its passion to harness all methods to generate energy, is a key propagator of the Wave Energy Generation. This method involves waves rolling along energy collectors, plates moving back and forth, pressurising the sea water into pipes, leading the pressurised water to a turbine and/or a reverse osmosis system in a dry and easily accessible location for energy conversion and desalinated water.

[SOLAR](#) [WIND](#) [WAVE](#) [GEOTHERMAL](#)

We think SUSTAINABLE



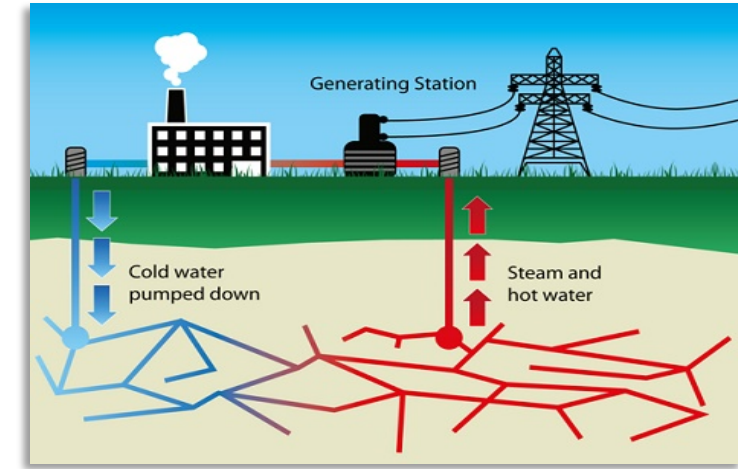
# OUR SOLUTIONS



## RENEWABLE ENERGY

### Make the most of the HEAT!

Geothermal (Geo = Earth, Thermal = Heat), is a form of energy obtained within the earth, originating from its core. Derived from the interior heat of the Earth, this alternative form of energy has high potential to supplant fossil and nuclear fuel in order to power social needs.



**PRISM** technology aids production of electricity from geothermal energy by drilling wells into the geothermal reservoirs. The hot water that rises emerges at the surface as steam which is then used to drive turbines producing electricity.

If the water is not hot enough to produce steam, it is used to heat homes and businesses.

[SOLAR](#) [WIND](#) [WAVE](#) [GEOTHERMAL](#)

We think SUSTAINABLE



# OUR SOLUTIONS



**SUSTAINABLE  
LIVING**

## Sustainability – Not just a Fad but the Need of the Hour

Sustainable living is all about a consistent and conscious practice of reducing your negative footprint on Nature. This means a decrease in demand for natural resources and an organised replacement of what you use, to the best of your ability.

It can mean consciously opting out of a consumption or even changing the way you do, to make it more Sustainable.



We think SUSTAINABLE



At **PRISM**, we have always strived to maintain sustainable goals and practices in whatever we do and sell.

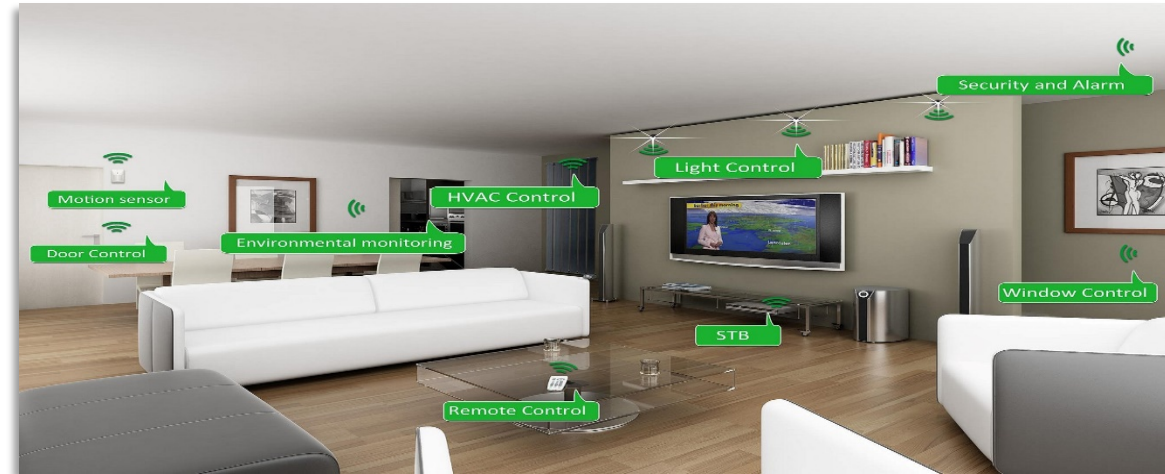
Our Renewable and Sustainable motto is carried beyond the realms of just the usual. We are constantly on the lookout for products, ideas and actions that can make a difference to the Planet we are on.



# OUR SOLUTIONS



iBMS



We think SUSTAINABLE



**Integrated Building Management System (iBMS)** is a computer-based automated system installed in buildings that controls and monitors the building's mechanical and electrical equipment such as ventilation, lighting, power systems, fire systems, and security systems.

With the advent of IoT, iBMS is not just a technological concept, but soon taking over businesses and the ways they function. From infrastructure automation, climate control, energy management to building intelligence, PRISM believes in connectivity, accessibility and efficiency.

# OUR SOLUTIONS



**iBMS**

A **SMART HOME** typically will have all its controlled devices connected to a central hub. These could be lighting, entertainment, temperature, home décor, architectural installations or security devices.



We think SUSTAINABLE



One of the most exciting, innovative and effortless outcomes of the Internet of Things is what we call, Building Intelligence.

Controlling all the physical devices through a single gateway, using a single handheld device or through an elegant, easy to plug-in panel on the wall, is where we are bringing it to. At **PRISM**, we believe if there is a better way, we'll find it.

# OUR SOLUTIONS



iBMS

The GREEN side of PRISM



We think SUSTAINABLE



Optimizing the HVAC and Lighting in your building can dramatically decrease your electricity bill. PRISM is partnering with technology partners, **HANSAENERGY SOLUTIONS** bringing their IoT platform of HES under the brand 75F for far better results in terms of efficiency, comfort level, monitoring and controls due to its innovative micro-zoning technology.

Besides this, solutions under the partnership also provide innovations in replacement of conventional lights with LEDs, Solar & HVAC Retrofits and Solar Water Heaters. Solutions are also tailormade to turn your existing physical infrastructure into LEED Certified.

# OUR SOLUTIONS



## ENVIRONMENT MONITORING

Tracking the Environment for the World!



A close watch on the elements in the environment such as toxins, chemicals, bacteria and pollutants, is what we take on when we call ourselves the **'Environment Watchers'**.

From monitoring the levels of pollution to the levels of moisture in the air, soil sampling and water monitoring, we do all it takes to read the signs of an oncoming deterioration in the quality of Life itself!

It does not stop there. At **PRISM**, we offer accessible, affordable and sustainable solutions to all the above.

We think SUSTAINABLE





# OUR SOLUTIONS



## ENVIRONMENT MONITORING

### Tracking the Environment for the World!

To be able to effectively bring out a solution that answers the concern at hand, an in-depth study and monitoring of the issue is imperative.

Technology partner, **OIZOM** is committed to the vision of **PRISM** to be the Environment Monitors for the world.



*We believe that we need to know our AIR to be able to breathe in it!*

We think SUSTAINABLE



# OUR SOLUTIONS



## ENVIRONMENT MONITORING

### An Eye on the Environment

**OIZOM** holds the key on various sensor technologies for its IoT instruments. The sensors are enhanced through constant calibrations and validations.

- Instruments have their sensors validated on proven fundamentals like NDIR, Electrochemical, Semiconductor, Noise-Mic, Optical, Laser-Scattering etc.
- Measurement methods are based on cross-technology comparison which allows the best sensors to be selected for the required application.
- Data transmission protocols are highly secured and protected by data encryption methods.
- Cloud servers can withhold high QPS with zero drop-down rate which makes cloud computing and real-time data readily available on the Terminal.
- Intelligent Algorithms, machine learning and data science, terminals provide accurate analysis, smart reports and custom notifications.

#### **OIZOM** Solutions:

1. **POLLUDRONE** - Smart city-specific environmental monitoring solution, powered by Solar or Non-Solar power supply, measures various environmental parameters like Particulate, Toxic Gases, Odors, Radiation, Traffic, Noise, Light & Weather
2. **ODORSENSE** - Complete odour monitoring solution, for use around landfill sites, wastewater treatment facilities, fertilizers & paper-pulp industries and soil-treatment sites.
3. **WEATHERCOM** - Enabled with essential weather parameters of wind speed & direction, rainfall, visibility, UV-radiation, light intensity, temperature, humidity & pressure. Completely integratable with POLLUDRONE Smart and Odor solutions. Designed for extreme weather conditions.
4. **DUSTROID** - Online particulate monitoring system to measure dust particles in the ambient air. Capable of measuring between 1 micron to 100 microns. Can be used in dust analysis and assist in Dust suppression.

We think SUSTAINABLE



# OUR SOLUTIONS



Technology

## Talking Tech



*Almost a third of small businesses surveyed by Canon said they spend too much time on admin and not enough on generating new business, one of many signs that things aren't running as smoothly as they could.*

We think SUSTAINABLE



At **PRISM**, when we are talking business and getting a business automated, it simply means to put all the existing stuff that you do into a system that automates processes, captures data, translates sales & growth and generates reports & insights. So that your key business activities are targeted and focused on.

The business activities listed below are the ones broadly targeted when we mean "Technology in Business":

- **Communication**
- **Customer Service**
- **Project Management**
- **Conferencing**
- **Building Intelligence**

# OUR SOLUTIONS



Technology

## Enterprise Resource Planning, the **R**eal way!

**PRISM** has joined hands with technology partners, Coral ME to bring to you an ERP Solution for your business that not only integrates the complete management information of your company to a common platform but also ensures that the practices incorporated reduces operation costs aiming to achieve the desired level of profitability. From giving you a thumbs up on Workflow Management, Business Intelligence, Managerial Dashboard, Business Process Scalability, Customizable Interfaces and Reports to Concepts and Practices of International Standards and Extensive Document Management, Coral ME's **REAL SOFT** ERP is the ideal solution.

### KEY MODULES

CRM  
ORDER MANAGEMENT  
PROCUREMENT  
INVENTORY  
SALES  
ACCOUNTS  
FINANCE  
PROJECT MANAGEMENT

JOB COSTING  
SUB CONTRACTS  
MANUFACTURING  
FIXED ASSETS  
SMART LINKING  
TIME SHEET  
HR & PAYROLL  
MIS



*If you already do not have it, it is that piece in the jigsaw you've been missing!*

We think SUSTAINABLE





# OUR SOLUTIONS



## Banking in a Box!

**PRISM** with technology partners, Teknospire brings under its fold solutions to simply take you through hassle-free financial transactions and more.

**TEKNOSPIRE** FinX Suites that covers Lite Banking Suit, Mobile Financial Services, Frictionless Payment, BI & Analytics and Automated Reconciliation makes it a 360° Banking Solution for Last Mile.

Teknospire's FinX Suite ensures:

- Lean banking engine to be able to hold no-frills CA/SA, loan accounts, key products like daily deposits, micro-loans. Mobile Money suite fully implemented at few sites.
- Omni-channel interfaces to end consumer as well as digital branches (agent led models)
- Switching engine for aggregating other products/services from sponsor banks / 3rd party service providers, connectivity into national financial infrastructure
- Merchant payments offline modules powered with QR code/ OTP / Virtual cards
- Back office reconciliation, reporting, compliance and dashboards.

We think SUSTAINABLE



## FinX Components



## Key Business Benefits

- Upgrade to a Digital Banking effortlessly
- Seamless integration with existing CBS
- Offer your customer - Banking anytime, anywhere
- Serve banking on any platform.
- Biometric authentication for extra security layer
- Reduce CAPEX

# OUR SOLUTIONS



Technology

## NeoBank!

**PRISM** with technology partners Teknospire, aims to take HyLo to greater heights to give access to the SME sector around the world where a solution to the need for such a marketplace is becoming imperative.

HyLo is short for a hyper-local marketplace engine that connects densely paced communities and commerce. Backed with Influencer marketing DNA, this commercial marketplace aims to create a comprehensive ecosystem within a locality connecting consumers with the service providers. Though it looks and sounds like a marketplace, it would ultimately evolve into a Neobank.

We think SUSTAINABLE

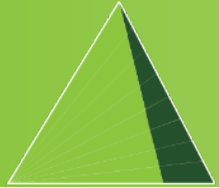


### Consumers

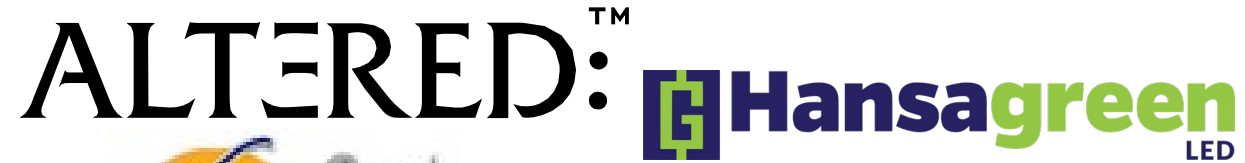
HyLo enables consumers to explore and place service requests availed by merchants in a locality from daily needs goods to special events, classes, monthly supplies etc. Example could be tuitions, vegetables, ironing, baking classes, groceries, Milk/bread, home tuition; all together in one app! "HyLo" an answer to hyper-local fulfillment.

### Service Providers

HyLo enables business owners to launch their own online store within the HyLo Marketplace and run business more efficiently and effectively. An integrated platform with order management, inventory value chain sales/procurement, campaign manager, accounting and customer loyalty.



# OUR PARTNERS



We think SUSTAINABLE





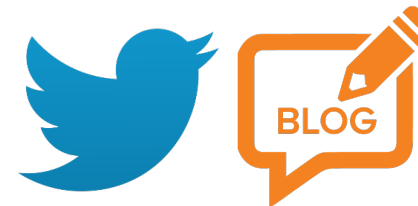
# CONNECT WITH US

Establishing a connect is as crucial and critical as strategizing and marketing.

We want to be Leaders in it. We want as much to hear from you as we would like ourselves to be heard.

Feel free to drop us a line with your query. We would love to get in touch.

*Alternatively, you could also follow us!*



[info@prismgroup.co](mailto:info@prismgroup.co)



[www.prismgroup.co](http://www.prismgroup.co)

We think SUSTAINABLE





# Thank You



1301, BAYSWATER  
BUSINESS BAY  
P.O BOX - 125673, DUBAI, UAE  
T : +971 4 4228786  
F : +971 4 4228768  
E : [info@prismgroup.co](mailto:info@prismgroup.co)



